

Hexham

Two bedroom house

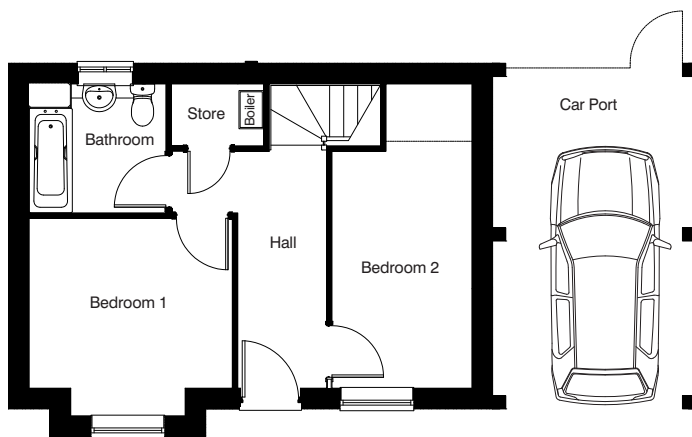


Solar panels

Please ask a sales advisor to confirm if solar panels are fitted to the property on the plot number you are interested in.

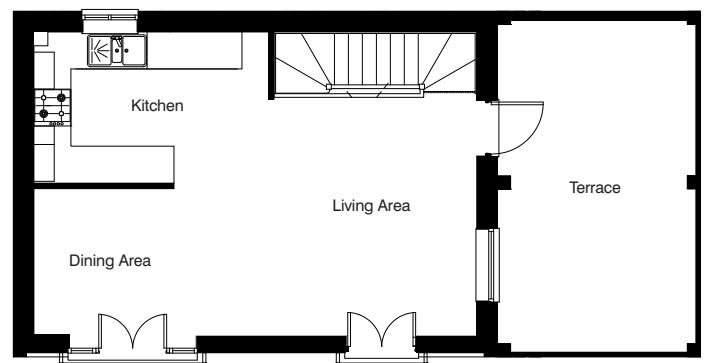


All house type images are for illustrative purposes only and the final building detailing and finishes may vary slightly from what is shown. Please see our sales advisors for full site specific details.



Ground floor

Bedroom 1	3.30m x 2.76m	10'10" x 9'1"
Bedroom 2 (minimum dimensions to bulkhead)	2.27m x 4.01m	7'6" x 13'2"
Bathroom	2.22m x 2.09m	7'4" x 6'11"



First floor

Living Area	3.80m x 3.85m	12'6" x 12'8"
Kitchen	3.81m x 2.45m	12'6" x 8'1"
Dining Area	3.39m x 2.39m	11'2" x 7'10"
Terrace	3.22m x 5.39m	10'7" x 17'8"

Depending on plot number, the floor plans for this house type may be opposite to those shown above.

All measurements shown are approximate maximum room dimensions.

CONSUMER CODE FOR HOME BUILDERS
www.consumercode.co.uk

Plot numbers

Please refer to the development brochure for confirmation of the plot numbers for this particular house type.

Every care has been taken to ensure the accuracy of these particulars but the contents shall not form part of any contract and the vendors reserve the right to alter specification and/or design without notice. Landscaping shown is for illustration purposes only.

LarkfleetHomes

www.larkfleethomes.co.uk